



TAURANGA WOODCRAFTER'S CLUB NEWSLETTER

Issue 229

April 2011

PRESIDENT'S Annual REPORT 2011;

It is an old saying that, "Time flies when you are having fun."

Clearly we must have been having a ball, the year has whizzed by so fast!

I have dredged around in the depths of memory, and more reliably, in the files of my computer, to bring you a summary of what we were doing, while were having all that fun.

Highlights;

A number of events stand out as highlights of the year:

Our hosting of the NAW AGM

The re-arrangement of our workshop

Another great Show

The establishment of our Scrollsaw Day as an event on the National calendar

The launch of our Website

Our Club visits to the Rotorua Club

The start of our Toymakers Group

The Carving Group's crafting of the shield for Bethlehem College.

The Workshop;

The workshop has had good use:

Our Groups hold most of their regular meetings here and mainly go in for hands-on activities.

We have had Demonstrations at many of our Club Meetings.

The Courses for beginners, in both Turning and Cabinet-making, stretch our capacity.

The purchase of a Scroll-saw and the creation of new Carving Tables, have added to our valuable equipment.

We have disposed of a lot of accumulated junk, to create more useable workshop space.

The Committee:

The Committee members have continued to work well :

Our tasks can be summed up as: managing the finances, monitoring the Club activities and keeping you all informed. Mostly the results speak for themselves, but I would mention that we keep in mind the Council's wish to demolish this building in a few years time. We have investigated three possibilities, so far none has been suitable.

Many Hands Make Light Work;

The problem with starting to thank people by name, is that I risk missing someone out.

However, here goes;

Jim our Librarian - he wishes you would use the books and videos more.

In This Issue;

| | |
|--------------------|-------------|
| President Report; | page 1-2 |
| Meeting Report; | page 3 |
| What's On; | page 4 |
| Group Reports; | pages 5-7 |
| Editorial; | Page 7 |
| Scrollsaw Workshop | Pages 8-9 |
| Router Tips | Pages 10-11 |
| Notice Board | page 12 |

TWCC Committee;**President;**

Doug St.George 573 8399

Vice President;

Peter Seaton 576 8083

Secretary;

Geoff Warth 579 3637

Treasurer;

Paul Grainger-Allen 07 333 2579

Newsletter Ed.

Selby West 578 8934

Librarian;

Jim Reilly 577 9574

Workshop Mgr.;

Ralph Harding 544 0830

Wood Person;

Mike McCarthy 575 2991

Club Electrician;

Graham Harwood 544 2344

Committee;

Barry Kenworthy 533 3747

Harry Bimler 572 2071

Grant Parker 544 9373

Roy Tregilgas 574 9822

Club Meeting;

3rd Saturday afternoon of each month 1.00pm at our Clubrooms.

Clubrooms;

16 Yatton Street Greerton Tauranga.

Correspondence ;

P.O. Box 9270 Greerton Tauranga

Secretary E-mail;

Tas Davie tasd@actrix.co.nz

Club Website;

www.taurangawoodcraftersclub.org

Next Meeting;

May 21st, 2011

Group on duty

Group Five.

Demonstration-Speaker;

Roy Tregilgas on applying tints using a Air brush

Ralph our Workshop Manager - he would appreciate it if members would be more forthcoming in reporting problems and breakages.

Graham our Electrician - who does an annual check of all our gear.

Mike our Wood man - sadly a lot of timber gets left in the racks and spoils, it's there to be used.

Selby our Magazine Editor - who is key in our communication chain. Thanks particularly for your recounting of the Club's history.

Paul who set up and manages our Website - bringing us into the 21st century.

Our Group Leaders - Ken, Seth, Jacob, Mike, Jim and Roy. The Groups are the real strength of the Club.

The Tutors for our Beginners Classes - Barry and Ian, with occasional help from Milan, Merv and myself.

The Show Committee - Allan, last year's leader, and the new team: Peter, Mike, Harry and Roy.

The Club Committee - Peter, Grant, Mike, Harry, Paul, Selby, Barry and Tas.

Our Auditor - Geoff, who keeps us all on the straight and narrow.

Last, but not least - a few members who shall remain nameless, but who put their hands in their pockets to pay the subscriptions of a couple of members who were unable to pay.

By my count that's 26 names and a few anonymous. Thank you all.

Looking to the Future ;

I plead again for more of you to pass on your skills by doing Demonstrations for the Club. I know that it's modesty or nervousness that holds you back. But remember the people you have learned from in the past, they were modest and nervous too. You don't have to be a Richard Raffan, just show us what you can do.

Our Show Committee has opted for a new venue and has some exciting ideas on how to make the event bigger and better, let's all get involved and give this our whole-hearted support.

We must keep focussed on the need to find a new home for the Club in a few years. The Committee has decided that a couple of us should have a meeting with the Mayor to try get a better idea of Council's thinking on this.

Doug St.George 16/4/2011



The Tauranga Woodcrafter's Club is a member of the National Association of Woodworkers

AGM for 2011-2012 Meeting Report;

It was good to see 33 members present at our AGM meeting, with 7 apologizes. Doug Duke is very sick with lung cancer, and is in Hospital.

The Committee for 2011-2012 are as follows; **President;** Doug St.George, **Vice President;** Peter Seaton, **Secretary;** Geoff Warth (replacing Tas Davie who wanted to step down) **Treasurer;** Paul Grainger-Allen, **Newsletter Editor;** Selby West, **Committee;** Barry Kenworthy, Harry Bimler, Grant Parker, and Roy Tregilgas.

Librarian; Jim Reilly, **Workshop Manager;** Ralph Harding, **Wood Person;** Mike McCarthy. Club **Electrician;** Graham Harwood.

Subscriptions; These remain the same as last year at \$65.00 for double and \$60.00 for single, with the usual \$5.00 discount if paid by the 31st May. The Committee proposed that there should be a bigger differences for members receiving their Newsletters by post and suggested \$10.00 more for the posted version. This was accepted by the members at the meeting.

There was some nice work on the critique table again today Derek Kerwood critiqued them again.

The raffle was first won by Tas Davie, who won it last month, so he said re-draw it and Seth Douglas won it



Barry Kenworthy



Barry Kenworthy



Roy Tregilgas



Doug St George



Roy Tregilgas

WHATS ON

Royal Easter Show; Thursday 21st-25th April
2011 Auckland Showground's.

Woodcraft; Entries close Friday, 18th March
2011.

Senior Steward Dick Veitch (09-298-5775
dveitch@kiwilink.co.nz.

Entry fee A&P Members \$10 per entry

Non Members \$15 per entry

Prize money First Prize \$400

Second Prize

Third Prize \$100

Special Awards;

Supreme Exhibit in Show

\$500 to be judged from all category winners

Best Overall Woodcrafter

\$500 for most points accumulated from all classes

Best item by a first time entrant

1st \$200. 2nd \$100. Sponsored by South Auckland Woodturners, for the best entry by a person who has not won another prize in this competition.

Youth Award

\$50 for the best entry by a full-time primary, intermediate, or secondary school student.

The Woodcraft Section has been kindly been sponsored by;

Joiners Magazine , Munro Tools, Rosenfeld Kidson,
South Auckland Woodturners, Woodcut Tools.

Treeworkx Open Day; Saturday 30th April.

9am-3pm. 469 Paratu Road Walton, Matamata. The first road west of the Walton Golf Course on the Morrison/Matamata road.

Entry-\$25 per person-morning tea, lunch and demonstrations included. Meet Graham & Lesley on their home turf and view their wood selections. Enjoy the unique forested setting while reminiscing with fellow woodies. Select your trade products from Ron and Fishy. Catch up on new techniques. Genuine sale prices on the day. Bookings not required.

Graham 07 888 3800 goliver@no8wireless.co.nz

Ron 07 8883964396

Taranaki Woodcraft Festival; 4th & 5th June

Waitara War Memorial Hall.

Competition Categories include; Carving/Sculpture, Woodturning, Furniture, Marquetry, Intarsia, Toys/models, Pinus or Macrocarpa, College age and Novice. Good prize money, Trade stalls and Demonstrations.

Organised by the Waitara Rotary Club.

For further information contact

Gordon Oliver, (06)757 0700

E-mail gordon@clear.net.nz

NAW Annual General Meeting; Saturday 9th July 2011 to be held at 1pm at Franklin Woodturners Club, Clubrooms , BMX Reserve. Collingwood Road Waiuku. Free live demonstrations will be held throughout the day commencing at 9.30am. Lunches will be available for those attending the full day.

on 07 888 4395





Group Reports

Group One; Woodcarvers; Eight members attended. Ivan, Alan, Jean and Stephanie progressed their current projects while Harry, Tom and Ken got deep into decoration of turned bowls by carving and texturing on the finished surface. Plenty of scope for crazy ideas! We were pleased to welcome back Barwick Harding who has re-joined the Club after a few years absence. A boat builder by trade, Barwick is also an accomplished woodcarver so we will all benefit by having him on board. Next meeting 9th May

Ken Hawkeswood Ph. 5780074

Group Two; Woodturners; 13 of us, of Group two met at my place on Tuesday, 12th April, 2011. I ring the usual, listed members reminding them of where we are meeting. We had 2 new members amongst us regulars, and one of them had gone to the Clubrooms without notifying me of his wishes to attend. I really need to know who wishes to come, for many reasons. We won't see Merv Griffin and his wife Margaret until July, as they are off overseas. Doug Duke isn't very well at all, and is in Hospital. Many thanks to Marie and Ralph Harding, and Judy and Denis Toovey for the sumptuous afternoon tea. I am most grateful for you affording the time, Thank you.

For our next meeting, at the Clubrooms, Tuesday, 10th May, 2011 we intend using the lathes or machines, with 2 or 3 turners taking turns at producing something. The first Turner has 15 or 20 minutes, the 2nd carries on etc., to completion. Please bring along your usual working gear, dust coats, favourite tools and perhaps a piece of wood. We'll see how this turning method works out, as it looks quite interesting. Hope to see you in May, if not we'll understand, as we can't be in two places at the same time.

Seth Douglas Ph. 576 5815

Group Three; Woodturners; We met on Saturday, 2nd April, 2011 at the Clubrooms, without our compliment of usual members. Everything went off well, with ideas and suggestions. Roy Tregilgas and Jim Reilly had great ideas which we will implement. So, next month (May) meeting, we hope to use all the lathes and machines that are needed, with each of us turning, or making something. Bring along a piece of wood and your Favourite tools and don't forget your dustcoat. We haven't been in a habit of bringing our dustcoats, because we have been sitting and observing someone else doing the work. I reckon you'll have great fun producing something in groups, even if it is only shavings to show for your effort. Also don't forget to bring along what you have been making, for "Show and Tell" Thank you. Jim Reilly mentioned that you are now able to buy a litre container of Acetone from Mitre Mega 10 for \$16.30, also containers of Kumclean.

Turpentine, Kerosene etc., Andrews of Rotorua Brands.

To think, a small container of Acetone used to cost about \$9.00 so you used it sparingly. Mitre Mega 10 also have their HAND TOOLS BLITZ on at the moment.

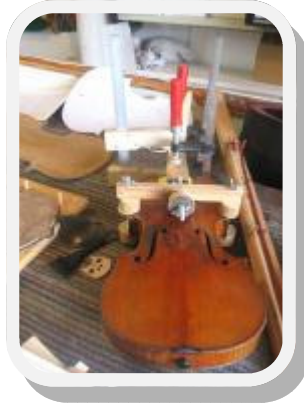
John Syme has had his operation at Whakatane Hospital, all is well.

We meet again at the Clubrooms on Saturday, 7th May, 2011. we are usually there at 9.00

Seth Douglas for Jim Reilly 577 9574



Group Four; Woodturners; There were 12 members present at the home of Terry Doherty, who makes, repairs, sets up and restores orchestral stringed instruments. The first thing you notice when you enter Terry's workshop is that there are no electric tools to be seen, other than a jigsaw which he very rarely uses. There are a number of jigs used in the making of these instruments as the tolerances are within 0.1500mm.



These instruments are made to exactly the same measurements, whether they are made in Terry's workshop, or overseas. A violin begins with sections of timber cut like slices of cake from a tree trunk. The wood must be strong and springy and is dried for at least 10 years. The wood used is; Back, Neck and Ribs of Maple, and the Belly, Spruce. The outline of the Belly (front) is marked out using a template, and is carefully cut out by hand, using a very fine saw. The wood is first carved into the appropriate shape with a gouge. With very small smooth planes the gouge marks are removed, and all the sanding is done by hand. Delicate work is required, as even slight variations will alter the Violin sound. A narrow channel is cut around the edge of the Belly (1.5mm x 1.5mm). A thin strip of cawed purfling is then inlaid into the channel, which is made of flexible layers of white Maple and dyed Pear. Purfling is decorative but also helps to prevent the wood of the Belly from splitting. The Ribs (sides) are fitted around a mound in which several small wooden blocks are first placed. Using a heated bending iron to make the Rib flexible, these Ribs are then glued to the blocks. The Neck and the Scroll are carved using fine bladed saws and gouges. Holes are drilled for the four Ebony Tuning Pegs. To complete the instrument, sound holes are cut in the Belly, and a wooden base bar glued along the inside surface to distribute the vibrations from the bridge to the Belly. The back and the Belly are glued to the ribs and the neck is added. The glue



Terry uses is like the glue we used in woodworking classes at School-a scoop of glue into a metal container and heated in a pot of water. After the neck is added, the whole body is coloured (using food colouring) and then varnished. The visible fittings (Ebony finger board, bridge, chinrest etc.) are added and the sound post inserted under the bridge. This helps carry the vibrations between the Belly and the Back. Finally the strings are added. It takes Terry 8 to 12 months to complete one Violin.

The Group would like to thank Terry for a most informative afternoon.

At our "Show and Tell" George had some samples of next month's project. New member Graham, a bowl turned from glued segment of Rewarewa, Harry, two bowls from Walnut with some carving on the sides.

The next Group 4 meeting will be at the Clubrooms at 1pm Tuesday 3rd May. Bring all your favourite tools and your imagination.

Group Five; Scrollsaw and Intarsia; There were ten of us at our Group Meeting this month. Those who did not have projects of their own to work on, assisted Rob in taking the paper patterns off the wood, for the sides of the trinkets boxes he is making for his daughters. He brought along the lids with very intricate scrollwork that he had completed to show us. We eagerly await his return with the completed boxes for us to see. He is making a wonderful job. Roy had scroll picture, done in the negative, to match one that he had already done. Our group is getting more adventurous and frequently coming up with new ideas. We also had two intarsia pieces on the display table.

My thanks to the wives who made scones for the morning teas for our Scrollsaw day. Our next group meeting will be held on Wednesday 4th May commencing at 9.30am
Lauren Tubby Phone 572 0104.

BEGINNERS GROUP; No Report;
Doug St. George. 573 8399



Toy making Group; Wow, we had ten members turn up this month, the group just keeps growing. There are now twelve members on the group list. The good thing was nobody was left standing around doing nothing, The five trucks are all but finished, its amazing how much time is taken up gluing and screwing, so next month will definitely see them finished. The next project has been sorted and started, and that is 10 dolls bassinet's, it doesn't take much more to make 10 rather than 5 so were going for it. We will be needing a small mattress and pillow to go with these, so if any of the wives are willing to help out that would be great. Tas has already volunteered his, but we could do with a little more help.

As an aside, I was doing some more scroll saw work and I made the longest cut I have ever done by far. How long did you say?. Well I don't know how long in length but it was 1hr in time. Makes your eyes water a bit.

The May meeting is on Sat 14th at 9-30am. See you there. Roy

Roy Tregilgas Ph. 574 9822



From the editor;

Hi everyone,

Thanks for trusting me to do your Newsletter for another year. I have got off to a good start by changing a few things. I had a comment from one of our newer members about the columns in the Newsletter, and in an email version, of having to scroll from one column to the next. Well this in this issue, I have changed a few things, and cut out of a lot of the columns I had, so maybe this will make reading it a lot easier on line. I have also decided to move the information panel with index etc. to the second page. These are the main changes, but from now on you may see the pages change to suit the content in that particular page.

I am including a membership form in this Newsletter for your convenience, and to understand the new subscription for this year. I intend making up a new list of paid-up members, as I receive the list from Paul. I am working on the idea of having this list ready to publish in the June Newsletter. This gives members 2 month's to pay to get on that list.

Regards Selby West email;

Selby@actrix.gen.nz

TAURANGA WOODCRAFTER'S CLUB SCROLLSAW SEMINAR 2011



On Saturday 26th. March, the Scrollsaw group held its second Seminar in the Clubrooms of the Tauranga Woodcrafters Club. 4 from Auckland, 3 Whakatane, 5 locals, attended.

This year the participants had a choice between Intarsia, and Scrollwork. 5 chose Intarsia, under the capable tutelage of Barry Kenworthy. Barry provided the plans and timber for his group to work with, and spent a busy day guiding them through the many steps to making a successful piece of Intarsia.

Scrollwork, guided by Jacob von Holzen, started with a simple wall bracket with a leaf overlay. Then a Llama cut-out, on a stand, which involved two piercing cuts. The third project entailed the compound cutting out of a goose. The design is of a front and side view of the subject separated by a centre line. The design is folded on the centre line to right angles and then glued to two faces of a block of suitable size. One side is cut out, the work turned to bring the other side of the design to the top. When cutting is complete the whole is carefully separated to expose the completed figure.

The fourth exercise of the day was bevel cutting. Two pieces of timber of the same thickness are taped together, the saw table is tilted so the design when cut out

will drop into the bottom piece making a perfectly tight fit.

The final piece was to be a project with many piercing cut-outs. This one was discarded because several of the visitor's Scrollsaws had very awkward and complicated methods of releasing and retightening the blade. Particularly, the models that required the removal of the clamps and

needed to be secured in a special jig using an Allan key. Having seen the simple blade clamps with wing nuts we have adapted to our cheaper Scrollsaws, a couple of our visitors said they would hone their engineering skills, and make up similar adaptors for their machines.

The scrollsawyers' who finished their projects early, were allotted extra projects to fill in time while the others caught up.

Our thanks go out to Lauren Tubby for all the work she did with advertising in the N.A.W., taking registrations and providing all the food. Lew, chief dish washer, and all the members of the Scrollsaw group who helped in the setting up, bringing work for our display table and finally helping with the clear up afterwards THANK YOU.

Although it rained throughout the day it did not seem to dampen the enthusiasm of those taking part, and we hope they all went away having learnt something and will not let the dust settle on their Scrollsaws.

Jacob von Holzen.



Some of the work on display at the Scrollsaw workshop and scrollsawyers' at work.



Router Tips;

At-A-glance profile of router bits



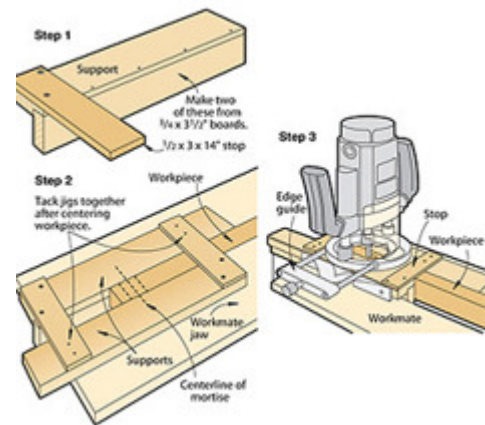
It often requires a second glance at a router bit to select the correct cutter for the desired shape. For a reference of the bit profile, rout an 8" length of scrap material with each bit. Crosscut the profile to a shorter length. With hook-and-loop material, hang the profile

near the respective bit. Then hold the profile to the end of your workpiece before you make any cuts. Always return the profiles and bits to the correct storage spots.

-- From the WOOD® magazine shop

A speedy way to rout multiple mortises

If you cut a lot of mortises but you don't own a mortising attachment for your drill press, don't spend hours chopping the mor-



tises by hand. Here's a solution: Use a plunge router with these simple jigs, and you can cut mortises

as fast as you can rout them. Glue and nail together two jigs as shown in Step 1. Make them about 4" longer than your router base plus the length of the mortise.

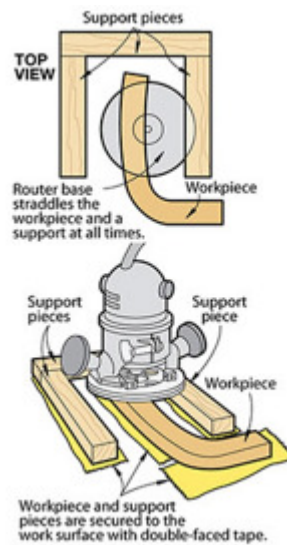
Turn the jigs so the stops face in opposite directions and loosely position them in a bench vice or Workmate. Slide the board to be mortised between the jigs, with the centreline of the mortise as shown in Step 2.

Align the two stops so that the distance from the mortise centreline to each stop measures half the length of the mortise plus half the width of your router base minus half the diameter of your bit.

Tighten the vice or Workmate, extend the mortise centreline across the supports, and tack each stop to the opposite support. Attach an edge guide to your router, centre the bit on the workpiece, and then rout the mortise. The centreline markings on the supports enable you to quickly align the next workpiece.

-- Ronan Cambridge, Ottawa, O

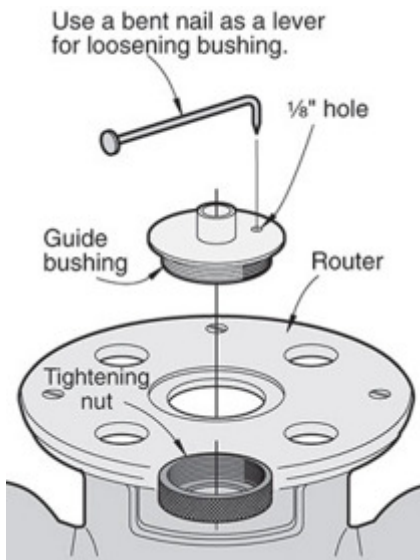
Scrapwood shapes give router needed support



Edge-routing narrow, curved workpiece becomes a challenge without a router table. The router keeps tipping, digging the bit into your work and spoiling it. From Scrapwood the same thickness as your workpiece, cut straight or curved supporting pieces about 1" wide.

Arrange them around your workpiece as shown, and then rout away. With the router riding on both the workpiece and the supports, you'll avoid nicked edges and chewed-up corners. Be sure to make the supports the same height as the workpiece. If you use double-faced tape to hold the workpiece in position, for instance, use it to hold your supports, too.

-- Alex Polakowski, Skokie, Ill.



Template guide bushings for your router can jam tightly after just a little use. If you can't unscrew yours with your fingers and you don't want to rough up the edge of the bushing with a pair of pliers, try this simple technique using a bent nail.

Drill a 1/8" hole on the edge of the bushing close enough to the centre to clear the threads underneath. Then, the next time your bushing sticks, simply insert a bent finishing nail in the 1/8" hole and push the other end of the nail counter clockwise against the centre shaft on the bushing. The leverage from the nail will loosen the bushing easily.

-- Henry Borger, Brooksville, Fla.

Making your own lathe tools

Chrome and black shafting available (ex gas struts)

Sizes; Mostly 10 and 12mm with small amount of 14mm diameter

lengths; 10mm, 18 to 34cm. 12mm, 26 to 32cm. 14mm, 20 to 34cm

I will have to charge the following due to work and metal cutting blades worn out in preparing one end of shafting. Other end original fitting, may be useful so left on.

10mm \$1.00 each. 12mm \$2.00 each. 14mm \$2.50 each

10mm shaft ideal to make pointy tools, and small detailing tools. 12mm shaft makes a good shaft for holding Woodcut bits and also for holding concrete nails with a 3mm grub screw to make long lasting very small tools for small work. 14mm shaft a good heavy shaft for holding the larger Woodcut bits etc. Make your own handle and glue up with a little super glue and you have a very useful lathe tool.

Please contact Tas Davie Ph. 576 8066 with any questions and supply.

THE TAURANGA SENIORNET CLUB

Where Seniors learn Computing from other Seniors

Where are we?

Our Learning Centre is at Unit 70, Historic Village, 17th Avenue, Tauranga. That's just uphill from the now-closed Wickham School. We have our own drive-in entrance. Turn right once through the gateway and then park.

Quality Woodworking Tools Ltd

3/11 Amohia Street, Kapiti Lights
Paraparaumu 5032 Phone 04 297 0976

Dave Hardy runs a small dedicated Woodworking Tool store in Paraparaumu, specialising in good quality hand and power tools, and has recently become the New Zealand importer of Ashley Iles

For Sale

Log seal (the new name for Mobil CER)

\$5.50 per litre

Robert Thomson Ph. 576 3960

For Sale

"New Zealand Greenstone"

cut-offs

These small pieces of cut-offs are ideal for resin in-lay work

1/2lb bags \$25.00

Grant

Ph. 07 544 9373



Woodcut **Teknatool** **MUNRO TOOLS LTD**

Turning Tools Ltd

Specialists in tools for wood turning

Ian Fish

09 4181312
027 2848815

ipfish@xtra.co.nz
www.turningtools.co.nz

Club/Guild Newsletters;

This Club/ Guild aims to assist members to improve their woodworking skills. Not all such activities occur in our Club premises, and some activities or events are promoted through this Newsletter and others directly to members in some other ways, but they are still Club/Guild activities, please support them. These activities may include personal and group tuition of members by other members (we all try to help one another for the benefit of the Club/Guild in this way) sessions in member's workshops, wood-gathering, events promoting our activities to members of the public, and other such