



The Woodcrafters

TAURANGA WOODCRAFTER'S CLUB NEWSLETTER

Issue 236

November 2011

Presidents Report;

SUMMER IS JUST AROUND THE CORNER

Sadly only a handful of us went through to Rotorua to see Graeme Priddle last week, the rest of you missed a treat. Graeme is a natural entertainer as well as a skilled turner and demonstrator. He goes in for a lot of detail, and showed us a myriad of techniques for embellishing woodwork by rotary carving, pyrography, hand carving and colouring. In addition to that, he had a wonderful selection of his very artistic work on display.

We had another treat at our own Club Meeting this month, with Mike Lewis demonstrating. Mike is a turner of long experience, both in South Africa and NZ. He has quite a number of interesting tricks up his sleeve, and he showed us a technique for off-centre turning, without the need for an expensive off-centre chuck. Mike is very good at explaining what he is doing, and his demonstration was a good balance of talk and action. Thank you Mike.

It was a joy to be able to hand over a huge quantity of wooden toys to the Salvation Army, a lot of kids will have a better Christmas than they might have otherwise had. A big thank you to all of our toymakers for your efforts.

Somebody has left a set of what looks like house keys at the Clubrooms, if you are camped out in your own back yard, wondering how to get back inside, then maybe they are yours !!!!!!!

Derek Kerwood, our Master of the Critique, has offered to give the Club a demonstration of carving on turned work. Group Leaders, this is a great opportunity to bring us another skilled demo, so be the first to ring him up and nail down a date. Ph. 572 2512. Please make this on a Club Day, not just a Group day.

Doug St.George.

NOTICES:

End of Year Club Dinner; Sat 10th Dec, 6-30pm @ RSA Greerton. Please contact secretary Geoff Warth 579 3637 if you want to be added to the list of those booked

Easter Craft Sale

Sun 10th April, TECT Arena Baypark, NZ Motor Caravan Association.

\$20 per space, you can bring your own table or use a venue one, at no extra charge.

Contact Doug 573 8399 for an application form.

Doug St.George 573 8399



In This Issue;

President Report;	page	1
Meeting Report;	page	2-3
What's on	page	4
Group Reports;	pages	5-8
From the Editor	Page	8
Woodworking Tips	Page	9-11
Advertising	Page	12

TWCC Committee;

President;

Doug St.George 573 8399

Vice President;

Peter Seaton 576 8083

Secretary;

Geoff Warth 579 3637

Treasurer;

Paul Grainger-Allen 07 333 2579

Newsletter Ed.

Selby West 578 8934

Librarian;

Jim Reilly 577 9574

Workshop Mgr.;

Ralph Harding 544 0830

Wood Person;

Mike McCarthy 575 2991

Committee;

Barry Kenworthy 533 3747

Harry Bimler 572 2071

Grant Parker 544 9373

Roy Tregilgas 574 9822

Club Meeting;

3rd Saturday afternoon of each month 1.00pm at our Clubrooms.

Clubrooms;

16 Yatton Street Greerton Tauranga.

Correspondence ;

P.O. Box 9270 Greerton Tauranga

Secretary E-mail;

Geoff Warth; gep@xtra.co.nz

Club Website;

www.taurangawoodcraftersclub.org

Next Meeting;

Saturday December 17th.

Group on duty

Group Five, Scrollsaw Group.

Demonstration-Speaker;

Committee Meeting;

Apologies; Selby West and Peter Seaton

Correspondence; NZ Motor Caravan Association invited us to a Craft Market at the TECT arena, Baypark, Easter Sunday, 2012, \$20.00 per table.

Five of our members went to Graeme Priddle's Demonstration last Thursday Night at Rotorua Club. It was an awesome Demo., and night at Rotorua.

Roy Tregilgas has 5+ new members possibly from the classes being held at the Club on Wednesday nights.

There Will be no Committee meeting in January

General Meeting;

Members in attendance; Thirty Three

Next weekend 26/11/11 Garage Sale

December Christmas Social. 10th December at the RSA. List handed around for people's names. Approximate 10+ people going.

Out of town Demonstrators to be paid \$50.00 for travel to demonstrate at our Club.

The toys the members had made for Christmas was given to the Salvation Army at this meeting.

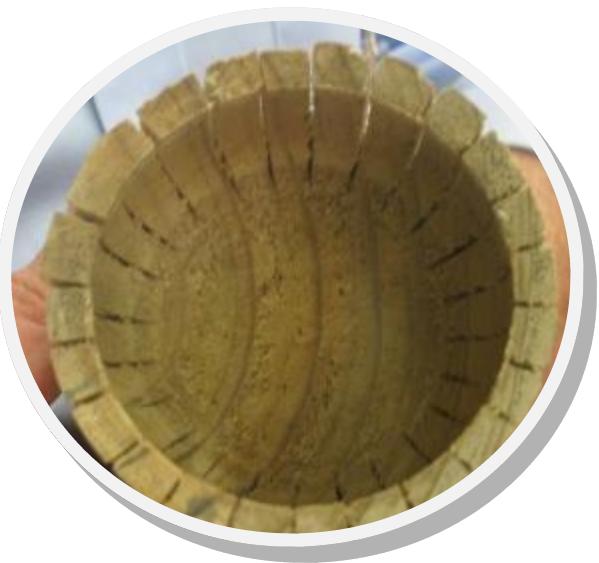


Critique by Derek Kerwood. About 9+ items on display.



Our Demonstrator was; Mike Lewis, from Whakatane, and his subject was "making off centre lidded boxes from unknown timber species". The lid is off centre with about 5+ centres.





WHATS ON

Turnfest in Australia; Seaward Resort & Water Park, Surfers Paradise, Gold Coast, Australia. Turnfest is Australia's largest and longest running woodturning symposium.

For more information contact David Drescher. E-mail; ddresche@ptusnet.com.au

Website; www.turnfest.com.au Next Event 22nd, 23rd, 24th & 25th March 2012

WOODTURNING AS CHRISTMAS GIFTS

28 November to 24 December 2011

South Auckland Woodturners Guild will have more than 2000 handcrafted items of woodturning exhibited at 241 Great South Road, Papakura, from 28 November to 24 December 2011. That is close to the middle of the town, nearly opposite the entrance to Countdown.

Normal shopping hours apply. The range of goods from 35 club members is expected to be high - bowls, vases, boxes, spinning tops, platters, chopping boards, clocks, pens, and more. If it is not there, ask and someone may be able to make it for you. All items are for sale as this is the prime fundraising activity for the Guild. Club members are present to advise and help anyone with an interest in woodturning.

CHRISTMAS SHOP

Otago Woodturners Guild

The Otago Woodturners Guild Inc. have a wide range of wooden items, made from a variety of timber for sale e.g. bowls, plates, clock, pens, children's toys. Come along, have a look and buy.

30 November to 23 December 2011

The Community Gallery, Princes Street, Dunedin (just past the Octagon, next to the I-Site)

EFTPOS (no credit cards), cash or cheque only.

Monday to Friday 9-5.30pm, Saturday and Sunday 10-4pm.

Lake Taupo Woodworkers Guild

9th-11th March 2012

Friday 9th. Start and set up.

Saturday 10th. 9am. Official Opening. Dinner at 6pm, and more turning till 10pm for those who are keen.

Sunday 11th 8am start. Final raffle and Prize Giving at 1pm.

Event details.

Lake Taupo Woodturning Jamboree to be held at the SPA HOTEL TAUPO.

For further information contact Jeff Downes. Phone (07) 3765621. E mail jkedownes@slingshot.co.nz

Tauranga Woodcrafters Club Annual scrollsaw workshop

Saturday 31 March 2012 9.00am to 4.00pm. Clubrooms, 16 Yatton Street, Tauranga.

Event Details:

Fretwork, Piercing, Bevel & Compound cutting with Jacob von Holzen and Intarsia with Barry Kenworthy. Please bring your own Scrollsaw if possible

Morning tea, Lunch and Afternoon tea provided

Cost \$25 per person

Registrations to Lauren Tubby

470 Papamoa Beach Road, Papamoa 3118

Phone 07 5720104 Email ltubby@xtra.co.nz





Group Reports

Group One; Woodcarvers; 2nd Monday

Eight members attended this month's group meeting. Ivan and Geoff successfully repaired the cracked carving table top, and added similar cleats to the other table fitted with a vise - insurance against future 'accidents'. The vise on each of these tables makes them top-heavy when not fixed to their bases - take care when moving them to and from storage.

Individual projects are all proceeding at a good pace and next month's meeting should be more revealing, as items get closer to finishing. Particular interest in Ivan's clever relief carving of a Christchurch quake-damaged historical building. He's full of surprises!

Barwick told the Group about the NZ Motor Caravan Association's Easter rally at the TECT Arena next year. There will be a craft section displaying a range of disciplines and tables would be available at a moderate charge. He intends to display his work and hopes others in our Club will be interested.

Further details available when they come to hand.

Next meeting 12th December.

Ken Hawkeswood Ph. 5780074

Group Two; Woodturners; 2nd Tuesday afternoon 1.30pm

Group Two met at the Clubrooms on Tuesday, 8th November, 2011. Syd Duncan had requested we show him how to use the tools that he had, but got lost looking for Jim Reilly's place on his way to our meeting.

Many thanks to Milan Bacica and Roy Tregilgas for arranging our next month meeting and also, many thanks to Paul Grainger-Allan for having the December Meeting at his place. We will need to take our lunch and will leave from the Clubrooms at 10.00am on Tuesday, 13th December, 2011. of course, we will need to know who is coming for transport to the venue, etc.

Seth Douglas Ph. 576 5815

Group Three; Woodturners; 1st Saturday 9.30am

Ten of us met at the Clubrooms on Saturday, 5th November, 2011. many thanks to Ian Dawkins for a splendid demonstration of turning a cube (about 100mm x 100mm) and showing the final results. Ian also had other pieces that he made and was able to explain to us how they were made. He also showed us how he embellishes the pieces. Thanks again Ian.

George Yardley brought some pieces of African hardwoods that are used in the making of pipes for the Bag Pipes and told us how he had turned them. Very interesting.

The year has almost gone. Our next meeting is at the Clubroom on Saturday 3rd December 2011. Don't forget to bring a small present on the day, to exchange, which is Group Three's usual end of the year gift (Season Greetings)

Seth Douglas for Jim Reilly 577 9574



Group Four; Woodturners; 1st Tuesday

There was a good number of Group Four gathered at the Clubrooms this month to see a demonstration by Ian Dawkins on "Decoration and colouring of Bowls and pieces of work" produced from a lathe.

Ian had two cups about 20mm in diameter on Morse taper, one of which was the driving centre for the headstock, and the other, the tail stock centre. He mounted a 150mm cube of wood between the cup centers, corner to corner, on the diagonal, and at 1200RPM turned a three winged vessel. The cups proved ideal to hold the corners of the wood, and did not slip.



For the next part of the demonstration, he mounted an aluminum disk about 300mm in diameter with hundreds of holes drilled (dividing head). The disk (dividing head) was placed on the head spindle with a spacer between, and held in place with a chuck. There was a spring mounted stopper clamped to the bed of the lathe. This setup then became the index wheel. A battery drill, with special marking drill was then mounted on the banjo out to the side of the lathe. Depending on which line of holes used on the index wheel, you could get a variation of design on your work. Ian used stains and furniture sticks for colouring.



Ian gave a lot of useful tips about the use of different chisels and their grinding angle, and he had a piece of wood with a spigot on the end, and a hollowed out section with a tennis ball glued in. This was used to lightly hold work- with the tail stock up- for finishing. He recommended that you use an old tennis ball, as the yellow fluff comes off a new ball.



At afternoon tea, Ian provided some turned tea light holders which would look good on a coffee table.

Next month's Group 4 meeting will be on Tuesday 6th December. Barry Kenworthy will be demonstrating flower making on the lathe.

Mike Harold Ph. 575 0767

The bit used in the drill for marking the object held in the chuck looked like a Forstener bit. The head of the drill was spring-loaded. The head also had a small cutting spike which you could mount in different positions to make the a different size cut.

Mike

Group Five; Scrollsaw and Intarsia; 1st Wednesday

Our group met at the clubrooms on Wednesday 2nd November.



Everyone is working on their own individual projects at present. Items on display included a Dragon marble toy by Barry, a miniature dartboard by Russell, also his completed cowboy boot with the clock face now inserted. Jacob had a marquetry picture of an old English cottage that he had almost finished. Rob brought along the clock mechanisms that he was making out of hardened pine. , Roy did a bit more to the fretwork dog with a pheasant in it's mouth that he has been working on, and Laureen was working on some "over-the-door cats. Jacob also brought along two boxes of toys that he had made for the Salvation Army "toys for Christmas" project.

Our next group meeting will be held on Wednesday 7th December commencing at 9.30am.

Please remember that our group is on duty for the December meeting.

Laureen Tubby Ph. 572 0104

Group Six; Toy making Group; 2nd Saturday

Time to make more toys, as the majority have now been given to the Salvation Army for the oncoming Xmas, and the rest we hope will be sold at the garage sale to raise funds for the club. I would like to thank all of those who have contributed over the past few months, I found a box sitting on the back bench the other day and I don't know who or where they came from, thank you anyway. Next months meeting is going to consist of reorganizing our wood stocks, the cupboard outside is in a mess and we don't even know what we have in there, so we will be building shelves to stack it all in and make it more accessible. If you have any ideas or plans for what we can make for this coming year bring them along, and lets have a go at them. Our next meeting is on Sat 10 Dec at 9-30am. See you all there. Roy

Roy Tregilgas Ph. 574 7405

A MOVE FOR THE GOOD As some of you know I have recently moved residence. What a good time to have a clean out, I thought I had got rid of enough excess, but the new place being a little smaller I had to have a second go to squeeze in. The most important thing is that I have ended up with a better workshop, the old one was spread between two small sheds, but now I have it in one better workable space, and with more height I can now have extra cupboards and shelves for storage, making the whole area a lot tidier. I have mounted all of my machinery on casters so they can be moved about for better access, and have built a folding table on the back of the router table for the scroll saw when it is in use. For lighting there is one in the centre of the ceiling of which I am going to boost up or add on to one way or another, a fluorescent light under the wall cupboards above the workbench, a multi adjustable triple light above the lathe, and I have adapted a light to fit the scroll saw. All in all it has been a beneficial move, and I have enjoyed setting up my new man cave. What the move did was make me think that we all need to stop every now and then and take a critical look at our working space, as we tend to just keep adding more and more things till it is cluttered, is it time you had a clean out?. A good clean out and rearrangement can not only make work easier and safer, but give you a new lease on life in a well organized workshop. My new contacts are: 26a Matavai St. Mt Maunganui Ph. 574-7405, Roy. P.S. Thanks go to Ray and Carroll, Tas and my ex neighbour for helping me with my move.

Roy Tregilgas

Beginners Group 3rd Saturday

No report.

Doug St.George 573 8399



GROUP 7 NIGHT SHIFT

It is a real pleasure to be doing the Night Shift, as there is so much enthusiasm amongst everyone. We have had a couple of quieter nights, but last week saw everyone on board and eager to go, there were 5 lathes and the scroll saw working, which kept Ian and I on our toes. If there is anyone else out there that would like to give us a hand, please yell out, as there are still people showing an interest in joining the group.

For a group that is just starting out, we are seeing some good work come from them, and the most important thing is they are wanting to produce quality work. I remembered to purchase two more lights for the lathes, so we now have all six lathes lit up, which makes one heck of a difference, especially at night. Next meetings are Wed 7th & 21st DEC. At 6-30pm See you there Roy

Roy Tregilgas 547 9822

From Your Editor's Desk;

Hi everyone,



It is great to get back home after our month long holiday, first on board the P&O Ship, "Princess Dawn" (five nights to Australia via a cruise around Norfolk Inland, then to Brisbane) then a week at the Gold Coast, a week at both Adelaide and Melbourne, a few days in Sydney, then home.

This Newsletter was waiting for me to do when we arrived, and it was good to see all the reports already waiting, to be added.

It was good that some of the members were able to go to Graeme Priddle's Demonstration in Rotorua. It sounds like it was a very interesting night. I suppose a lot of the members did not want to drive there at night.

Selby West

OUR RECENT GARAGE SALE

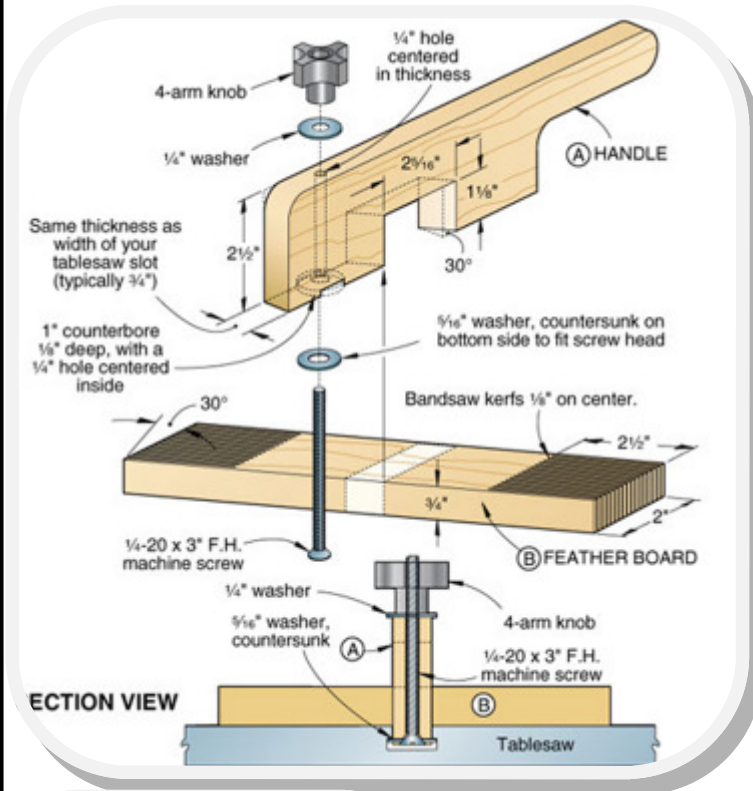
Our garage sale was held on Sat November 26th, it was advertised to start at 8am. Boy what a start, the first person arrived at 7-15am, and it looked like it was all on, but what a b----y fizzer it turned out to be. They arrived in drips and drabs till about 10-30, and we decided to pack it in at 11-00am. Sales? What sales, they came, they looked, they went, I wondered if there was a bad smell in the place !!!!!!!

The Club made the grand sum of \$10 and that was the same all round, so that's that!! You win some, you loose some!!!!

Roy



Using the feather board



With the saw off, slide the workpiece between the feather board and fence. Position the trailing edge of the feather board about 1" in front of the leading edge of the saw blade, where shown in the photos *on the previous page*. Put too close to the blade, the feather board can pinch the kerf and cause the workpiece to bind on the blade.

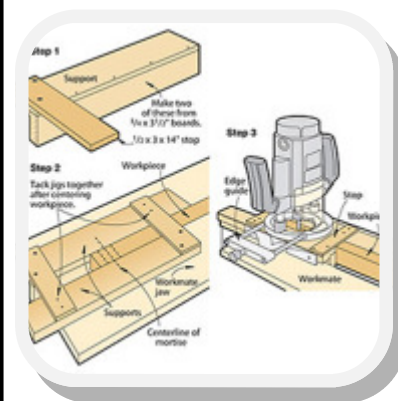
Position the shorter leading finger against the piece to be ripped. The piece should slide smoothly, yet be held firmly against the rip fence. If pushing the workpiece between the feather board and rip fence offers too much resistance, back part B off slightly. Once properly positioned, tighten the 4-arm knob to secure the assembly in place.

Project design: *Vernon Lee; Scott Spierling*



It often requires a second glance at a router bit to select the correct cutter for the desired shape. For a reference of the bit profile, rout an 8" length of scrap material with each bit. Crosscut the profile to a shorter length. With hook-and-loop material, hang the profile near the respective bit. Then hold the profile to the end of your workpiece before you make any cuts. Always return the profiles and bits to the correct storage spots.

-- from the *WOOD@* magazine shop

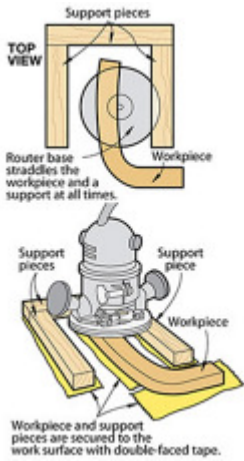


A speedy way to rout multiple mortises

If you cut a lot of mortises but you don't own a mortising attachment for your drill press, don't spend hours chopping the mortises by hand. Here's a solution: Use a plunge router with these simple jigs, and you can cut mortises as fast as you can rout them. Glue and nail together two jigs as shown in Step 1. Make them about 4" longer than your router base plus the length of the mortise.

Turn the jigs so the stops face in opposite directions and loosely position them in a bench vise or Workmate. Slide the board to be mortised between the jigs, with the centerline of the mortise as shown in Step 2. Align the two stops so that the distance from the mortise centerline to each stop measures half the length of the mortise plus half the width of your router base minus half the diameter of your bit.

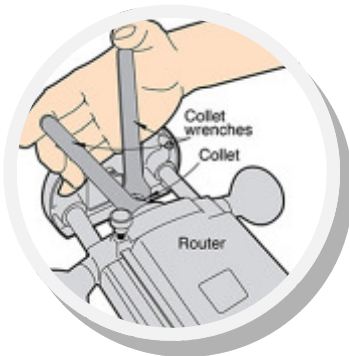
Tighten the vise or Workmate, extend the mortise centerline across the supports, and tack each stop to the opposite support. Attach an edge guide to your router, center the bit on the workpiece, then rout the mortise. The centerline markings on the supports enable you to quickly align the next workpiece.



Scrapwood shapes give router needed support

Edge-routing narrow, curved workpieces becomes a challenge without a router table. The router keeps tipping, digging the bit into your work and spoiling it. From Scrapwood the same thickness as your workpiece, cut straight or curved supporting pieces about 1" wide. Arrange them around your workpiece as shown, and then rout away. With the router riding on both the workpiece and the supports, you'll avoid nicked edges and chewed-up corners. Be sure to make the supports the same height as the workpiece. If you use double-faced tape to hold the workpiece in position, for instance, use it to hold your supports, too.

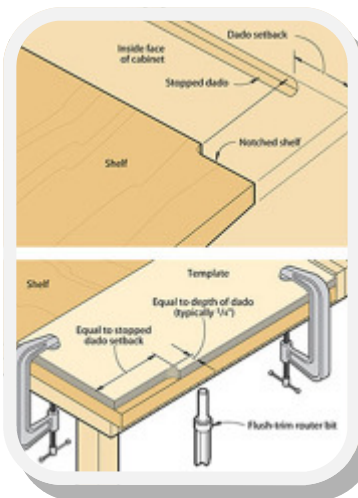
-- Alex Polakowski, Skokie, Ill.



One hand works best when tightening collets

A tight collet prevents your router bit from slipping up or down and ensures safer routing. But those tight collets don't loosen easily. When tightening or loosening router collets, you actually can gain more leverage with one hand than if you used two. Here's how.

First, position the two wrenches so they fit within your grip. Squeeze the wrench handles together to tighten or loosen the collet. Doing it this way, you won't bang your knuckles together.



Template and router speed up shelf notching

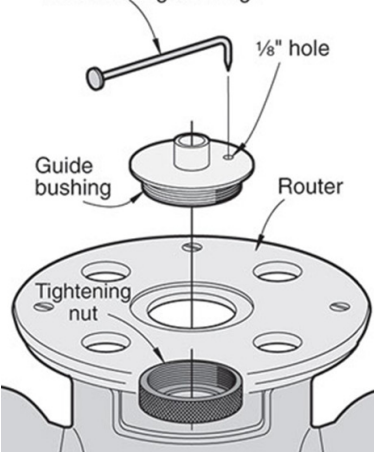
Notching a shelf to fit tightly into a stopped dado sure takes a lot of time. Isn't there a quicker way?

You can cut notches quickly and accurately with this simple template and a flush-trim router bit. Cut the template from 1/2" Baltic birch plywood or any other high-quality hardwood plywood without voids. Make it as long as the width of the shelf and wide enough so you can rout the notch without the router baseplate bumping into the clamp (usually about 4"). Next, cut the notch in the template. Size the width of the notch as deep as your stopped dado and size the length to match the dado setback.

Now, align the side and front edges of the template with the shelf edges and clamp the template where shown bottom right. Chuck a flush-trim bit into your router and rout your notch. Reposition the template on the other end of the shelf and rout again.

-- Ray Brown Jr., Boulder City, Nev.

Use a bent nail as a lever for loosening bushing.



Bent nail prevents damage to your router's guide bushing

Template guide bushings for your router can jam tightly after just a little use. If you can't unscrew yours with your fingers and you don't want to rough up the edge of the bushing with a pair of pliers, try this simple technique using a bent nail.

Drill a 1/8" hole on the edge of the bushing close enough to the center to clear the threads underneath. Then, the next time your bushing sticks, simply insert a bent finishing nail in the 1/8" hole and push the other end of the nail counterclockwise against the center shaft on the bushing. The leverage from the nail will loosen the bushing easily.

-- Henry Borger, Brooksville, Fla.

THE TAURANGA SENIORNET CLUB

Where Seniors learn Computing from other Seniors;

Our courses are, 2 hours, one day a week, and range from 4-9 weeks per course.

Our Learning Centre is at Unit 70, Historic Village, 17th Avenue, Tauranga. That's just uphill from the now-closed Wickham School. We have our own drive-in entrance. Turn right once through the gateway and then park.

STEEL TOOLZ LTD

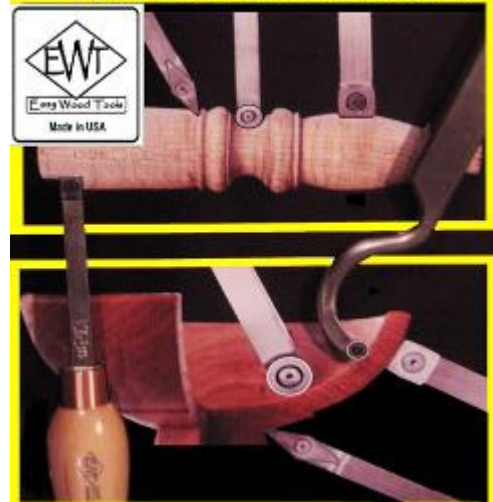


Quality power carving tools,



Cutting, Shaping, & Finishing
~ Turning Chisels With

TUNGSTEN CARBIDE TIPS THREE BASIC SHAPES



021 10338844 steelgi@hotmail.com

 **CARBA-TEC**
TOOLS FOR WOOD

nova™

NOW AVAILABLE AT CARBA-TEC® NZ

NOVA™ congratulates Carba-Tec® NZ Ltd on their NEW exclusive NOVA™ distributorship in New Zealand.

NOVA™ products are now available throughout New Zealand online and via catalogue, as well as through the Carba-Tec® extensive network of partner resellers.



Online and catalogue www.carbatec.co.nz

Or see their comprehensive showroom: 110 Harris Rd, East Tamaki, Auckland
8:30am - 5:00pm Monday to Friday, 9:00am - 12:00pm Saturday
Ph 0800 444 329 or 09 274 9454 Fax 09 274 9455

FOR SALE

3 Chuck inserts for a Nova 3000 lathe
\$20 each or \$50 for the three. New price is \$30 each
Contact Peter Seaton Ph. 5768083

For Sale

Log seal (the new name for Mobil CER)

\$5.50 per litre

Robert Thomson Ph. 576 3960

Club/Guild Newsletters;

This Club/ Guild aims to assist members to improve their woodworking skills. Not all such activities occur in our Club premises, and some activities or events are promoted through this Newsletter and others directly to members in some other ways, but they are still Club/Guild activities, please support them. These activities may include personal and group tuition of members by other members (we all try to help one another for the benefit of the Club/Guild in this way) sessions in member's workshops, wood-gathering, events promoting our activities to members of the public, and other such activities and events.